

TOMAHAWK

Bale Processor

Teagle



teagle.co.uk





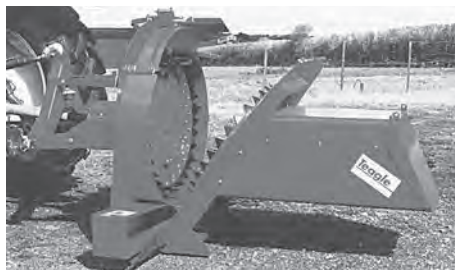
TOMAHAWK
8100

Contents

Benefits	page 1
Tomahawk 7100	page 2
Our latest development	page 3
Tomahawk 8100	page 4
Features & Options	page 5
Tomahawk 8500	page 6
Dual Chop	page 7
Case Study	page 8
Tomahawk 8555	page 9-10
Tomahawk 9500	page 11
Tomahawk 1010	page 12
Telehawk	page 13-14
Specifications	page 15-16

Established engineering excellence

Teagle machinery was established over 75 years ago, manufacturing the first Tomahawk bale shredder in 1983.



We remain a family business focussed on meeting the needs of our customers whether just around the corner, or in one of the 35 countries worldwide to which we regularly ship machinery.

From the outset, our machinery has been designed to be simple, robust and easy to use. We still stand by these values, with all our products being tested extensively on farms throughout the world to ensure that they perform reliably day-in day-out, under the toughest conditions.

The company now employs around 140 people, most of whom are based at our 15,000m² production facility in Cornwall, England.





A model to suit your needs

Attention to detail - through our focus on feeding and bedding machinery over the last 30 years, we are able to offer a machine to fulfil your needs.

Experience - thousands of farmers benefit daily from our experience in designing and manufacturing machinery that delivers on performance and reliability.



7100



8100



8500



9500



1010



Why own a Feeder Bedder?

Saving you time and money!

1 For Bedding

Labour saving - one person can quickly and easily bed livestock.

Save straw - users regularly report up to 30% savings. Straw is spread evenly across the entire bedding area. Only deliver as much straw as is required in each pen.

Cleaner and healthier livestock straw is lightly shredded for improved moisture absorbance and livestock comfort. Because straw is not chopped, the bed retains its structure to provide hygienic lying areas.

In cubicles - straw chopped/spread to suit your requirements.

Better manure - straw is incorporated with the muck more evenly for improved field application.

Safer bedding - no need to enter the pen.

2 For Feeding

One machine, two jobs bed down and feed with all Tomahawk models*

Versatility - If you can bale a crop, we can shred it! Feed clamp or baled silage*, hay and root crops.*

Improve palatability - users report improved feed conversion of shredded bale silage.

Livestock cannot be selective wastage is reduced.

**except Dual Chop*

3 For Processing

Pre-process straw for mixer wagons using our unique 'Dual Chop' system.

Improve efficiency - reduces mixer wagon processing time.

Effective feed conversion Precision cut straw stimulates digestion.

Prevent over-processing of silage in a Total Mixed Ration.

Process on demand - no need to stockpile.

4 Value for money - Impressive Payback

Existing Teagle Tomahawk owners are fully aware that the product can give an excellent return on investment in a very short time. All factors must be considered including commodity values, tractor operating costs, hourly labour rates and improved livestock welfare, all of which make the Tomahawk a hands down winner.



Compact Performance

The 7100 offers the ultimate in manoeuvrability, without compromising its output.

FEEDS

Baled Silage/Hay

SPREADS

Straw up to 22m

CAPACITY

3m³

DUAL CHOP OPTION

see page 7



Trailed option

Standard Equipment:

- Electronic in-cab controls
- Swivel chute with 280° rotation
- Single crossbeater
- Adjustable feed slide on swivel chute model
- Slip and overrun clutch on PTO
- Bed speed indicator
- Quick hitch mounting system
- Remote tailgate switch

Options:

- Side discharge chute
- LED road lighting kit
- Tailgate extension - recommended for full size rectangular bales
- Wide Angle PTO (trailed models)
- Trailed kit or castor wheels
- High pressure hydraulic filter
- Cable controls

For option details see page 5

See specification pages 15-16 for bale capacities

Features



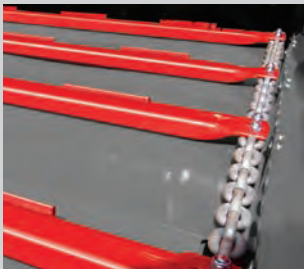
1 Wireless control

Slimline control panel uses Bluetooth® wireless technology for straightforward communication between the operator and the machine.



2 Easy loading

Tailgate is flared for easy self-loading and is supported by two hydraulic rams to enable the heaviest of bales to be loaded.



3 Heavy duty bed chain

Heavy duty bed chain with slats attached by 'U' bolts for easy maintenance. Grippers welded onto slats ensure positive bale feed.



4 Visual feedback

Indicator provides the operator with visual indication of bed chain speed.



5 Robust transmission

Chain drive to crossbeater ensures reliable transmission of maximum power.



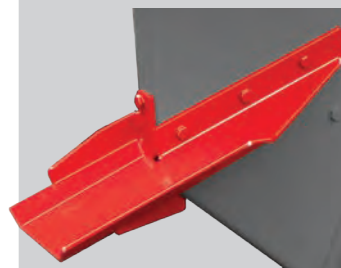
6 Consistent output

The bale restraint design works with the grippers on the slats to give a good tumbling action, ensuring a consistently high discharge rate with all materials.



7 Improved delivery

Large diameter fan with eight wide paddles deliver enormous air flow.



8 Easy maintenance

If a foreign object causes damage to the paddles they can be removed, repaired or replaced without removing the fan or splitting the machine.



9 Remote control tailgate & bed switch

Load bales without having to return to the tractor cab, ideal when removing netting or wrap.



10 Pre-selector gearbox

All Tomahawk models feature a high specification gearbox, with high/low fan speed gear preselection.

The Market Leader

The most popular feeder bedder on the market. Our progressive engineering delivers outstanding reliability and performance.



FEEDS

Clamp/Baled Silage

SPREADS

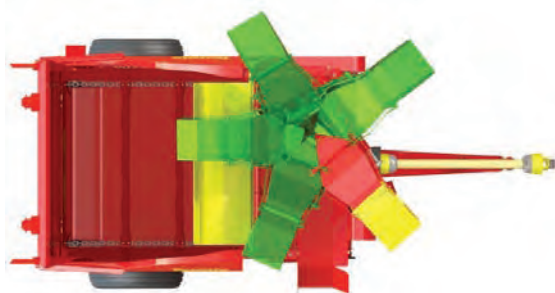
Straw up to 22m

CAPACITY

3.5m³

DUAL CHOP OPTION

see page 7



Swivel chute with 280° rotation

Standard Equipment:

- Electronic in-cab controls
- Swivel chute with 280° rotation
- Single crossbeater
- Adjustable feed slide on swivel chute model
- Slip and overrun clutch on PTO
- Bed speed indicator
- 10.5/15 wheels
- Remote tailgate switch

Options:

- Side discharge chute
- LED road lighting kit
- Tailgate extension
- Wide angle PTO
- 11.5/15 Wheels
- High pressure hydraulic filter
- Cable controls
- Greedy boards

For option details see page 5 See specifications pages 15-16 for bale capacities

Features and Options



1 Automatic Chain Oiler

Recommended for extended hours of processing. (Standard on 8555).



1 Road Lighting Kit

Essential for highway use, the front and rear markers ensure that you operate safely when travelling on the road. (standard on 8500, 8555, 9500 and 1010).



2 Greedy Boards

Increase capacity for loose materials (standard on 8500 and 8555 models).



2 Tailgate Extension

Increase capacity and ease of loading, attaches easily to a standard tailgate (not required on the 1010).



3 Wheels & Mudguards

Road work or mudded area these oversize tires and fenders are a great safety feature and also will protect your investment (standard on 8500, 8555, 9500 and 1010).



3 Hose Adaptor

Flexibility with accuracy when using the Hose adaptor and extended spout to bed calf hutches / pig arcs (Hose not included)

Chute options



1 Side chute

Deliver only to the right hand side, with slightly greater blow distance than the swivel chute. Discharge height is lower for easier access to buildings. Chute can be raised or lowered as required.



2 Swivel chute

For flexibility of delivery, the chute rotates 280° allowing material to be directed to where it is needed. An adjustable feed slide is fitted for accurate placement of feed materials.



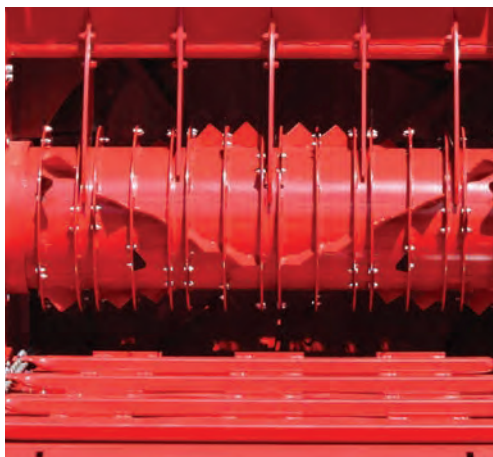
3 Swivel chute extension

To deliver material behind the Tomahawk 9500 and 1010 the optional swivel chute extension is required.

The Professionals' Choice

A wider body for greater capacity and easier loading of 5ft wide bales. Industrial grade durability is provided by wear resistant material in the fan housing.

- FEEDS**
Clamp/Baled Silage
- SPREADS**
Straw up to 25m
- CAPACITY**
4.5m³
- DUAL CHOP OPTION**
see page 7



Single crossbeater

Standard Equipment:

- Electronic in-cab controls
- Swivel chute with 280° deg. rotation
- Single crossbeater
- Adjustable feed slide on swivel chute model
- Remote tailgate switch
- Slip and overrun clutch on PTO
- Bed speed indicator
- 12.5/15 wheels with mudguards
- LED road lighting kit

Options:

- Side discharge chute
- Tailgate extension
- Wide angle PTO
- High pressure hydraulic filter

For option details see page 5 See specifications page 15-16 for bale capacities

Dual Chop

Chop short/spread long at the touch of a button

The 'Dual Chop' system incorporates a set of retractable blades that can be repositioned at the touch of a button, changing straw output from short chop (around 50mm) to no chop, and back again when desired in a matter of seconds.



'Dual Chop' mechanism in short chop position

- 1 Crossbeater**
Straw is teased from the bale by hooks positioned on the crossbeater.
- 2 Blades**
When the blades are lowered, straw is chopped using a scissor action.
- 3 Screen**
The straw then passes over a screen located behind the knife cassette. If the straw is too long it is recirculated through the blades by the crossbeater.
- 4 Blanking plate**
When the blades and blanking plate, shown in green, are raised straw passes above the screen and is discharged, without being chopped.
- 5 Fan chamber**
Straw that passes through or over the screen is drawn directly into the fan chamber for discharge.

7150

Ultimate Versatility

Ideally suited to reversing in cubicle sheds the 7150 Dual Chop offers the ultimate in maneuverability.



8150

Rugged Performance

The 8150 Trailed Dual Chop is able to process straw for adding to TMR Mixer. Push button controls allow different material lengths to be processed cubicle bedding.



The unique 'Dual Chop' system is available in swivel chute versions:
7150 mounted (above left), 8150 trailed (above right)

For these ladies size does matter!

Chopped straw is required for a variety of applications, which includes additional feed for a TMR and livestock bedding.

“We need to achieve butterfats of over 4%.”

Gavin Rodda runs a 330-cow dairy herd at Rosemorran Farm, Cornwall, producing an average of 9500 litres. Milk produced under contract for Cathedral City branded cheese, which demands the constituents and quality of the milk are consistently high.

To assist in meeting these standards Gavin has sought the help of a nutritionist Andy Hawken from Three Counties Feeds. Andy says “The challenge when taking over this farm, as their nutritionist, was to improve the milk constituents and keep the yield high. One of the tools in the armoury to achieve this was the addition of pre-chopped, short straw to the ration.”

“Short straw is more palatable and the cows now eat all of the ration”

“When out to grass, traditionally butterfats crash but by adding chopped straw to the ration we have seen butterfats at over 4% in the summer and in the winter up to 4.3%. Also, the proteins have stayed stable at 3.3% in the summer and 3.6% in the winter.”



Andy Hawken explains, “When you use chopped straw as part of a balanced diet you need to add extra protein to help improve rumen function otherwise you could cause straw

impaction which can lead to major health problems for the animal.”

Gavin says “At first we used a contractor to chop our straw but this became a costly and time consuming process. We contacted Teagle and they recommended the New Tomahawk 8555 Dual Chop with a removable screen which we can use for both feeding and bedding.

The unique scissor action, cutting mechanism of the Teagle Dual Chop cuts the straw consistently short and is the ideal material for feeding, creating effective rumen stimulation. Gavin adds “The straw is chopped short with clean cut ends. By chopping as needed keeps the straw fresh which the cows find more palatable, increasing intake and reducing waste for the dung pile!”

“We’ve seen improvements in cow health, condition and even fertility.”

Andy says, “We want to reduce the length of the straw significantly from the traditional “muzzle width” to at least half that size with sharp ends to produce multiple scratching effects on to the papillae (which are like little fingers). More scratching stimulates more papillae, creating more surface area and increasing the nutrients back into the cow. It’s achieved by chopping the straw consistently in the correct way.”

Gavin concludes “Apart from improving proteins and butterfats since incorporating the chopped straw into the diet we have also seen improvements in cow health, condition and fertility. We experienced no LDAs from last winter and continuing into this year.”

Key benefits of feeding a ration consisting of pre-processed straw:

The diet is more open and palatable

Less or no sorting occurs, resulting in a complete diet being fed

No over-processing, reduced mixing time

The added straw helps to stabilise the pH levels in the stomach

Better energy balance is achieved after calving, meaning improved health during the transition period

Adding straw to the diet can aid rumination and avoid acidosis

Helps to maintain butterfats during spring/summer grazing

If you feed silage, adding straw helps to reduce the potassium levels, which can be beneficial during calving

The additional fibre helps to retain the food in the stomach for longer

*Insert: Andy Hawken, Nutritionist Three Counties Feeds
Below: Gavin Rodda
photo © OateyMedia*



Chop short/spread long...

...at the touch of a button



3 OPERATING MODES

- 1 Short Chop**
knives and screen
- 2 Shred**
knives and bypass frame
- 3 Distribute**
no knives and bypass frame



The Ultimate Bale Processor

CHOP STRAW SHORT*



SPREAD LONG STRAW



CHOP HAY SHORT*



DISTRIBUTE CLAMP/BALED SILAGE



- POULTRY & CUBICLE BEDDING
- TMR PRE-PROCESSING

- LOOSE HOUSING
- LANDSCAPING/MULCHING

- TMR PRE-PROCESSING
- BARRIER FEEDING

- TMR PRE-PROCESSING
- BARRIER FEEDING



Save time and fuel

Time and fuel can be saved by processing straw prior to it being added to the ration in a diet feeder. 66,000 chops per minute offers fast and consistent performance.



No over processing

Pre-process straw so that the diet feeder does not need to mix for as long, thereby reducing the problem of over processing the silage in the ration.



Short chop length

Chopping down to an average of 2", with clean cut ends, means you can achieve the ideal material for feeding to create effective rumen stimulation and increased milk yields.

* Recommended <20% moisture content

8555 Dual Chop

Our latest development

The Tomahawk 8555 can process straw and clamp baled silage. The screen which is usually fitted to ensure a consistently short chop length, is now removable through the side of the machine.

FEEDS

Clamp/Baled Silage

SPREADS

Straw up to 22m

CAPACITY

4.5m³



(Optional bypass frame and storage rack shown)

Automatic chain lubrication system

The new 8555 incorporates an electronically controlled, automatic lubrication system for the crossbeater drive chain.

Convenient operation

The blanking frame, required to feed silage, can be conveniently stored under the machine in an optional stowage rack.

Standard Equipment:

- Electronic in-cab controls
- Swivel chute with 280° rotation
- Road lighting kit
- Adjustable feed slide on swivel chute model
- Remote tailgate switch
- High pressure hydraulic filter
- Slip and overrun clutch on PTO
- Bed speed indicator
- 12.5/15 wheels and fender kit

Options:

- Tailgate extension
- Wide angle PTO
- Extra screen
- Blanking Frame
- Screen Storage Rack

For option details see page 5 See specifications page 15-16 for bale capacities

9500

Our latest wide body design

Ideally suited to farmers where a combination of manoeuvrability and high capacity is required. The 9500 offers easier loading and a high output with a wear resistant fan housing for durability.

FEEDS

Clamp/Chopped Silage

SPREADS

Straw up to 25m

CAPACITY

8m³



Weigh system

Standard Equipment:

- Electronic in-cab controls
- Swivel chute with 280° rotation
- Twin crossbeaters
- Adjustable feed slide on swivel chute model
- Remote tailgate switch
- Slip and overrun clutch on PTO
- LED road lighting kit
- Bed speed indicator
- 305/55 R22 wheels & Mudguards

Options:

- Side discharge chute
- Wide angle PTO
- High pressure hydraulic filter
- Tailgate extension (600mm)
- Weigh system
- Greedy boards
- Braked axle
- Swivel chute extension

For option details see page 5 See specifications page 15-16 for bale capacities

Massive capacity and output

The biggest model in our range with the capacity to hold up to 4 rectangular bales. The 1010 incorporates wear resistant fan housing for durability and a braked axle for multiple site use.

FEEDS

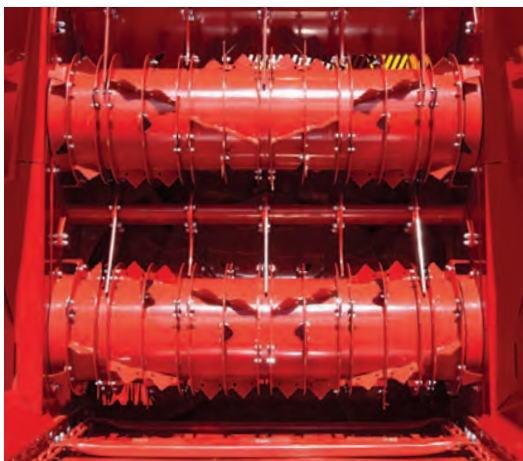
Clamp/Chopped Silage

SPREADS

Straw up to 25m

CAPACITY

10m³



Twin crossbeater

Standard Equipment:

- Electronic in-cab controls
- Swivel chute with 280° rotation
- Twin crossbeaters
- Adjustable feed slide on swivel chute model
- Remote tailgate switch
- Slip and overrun clutch on PTO
- LED road lighting kit
- Bed speed indicator
- 385/55 R22.5 wheels & Mudguards
- High pressure hydraulic filter

Options:

- Side discharge chute
- Wide angle PTO
- Weigh system
- Swivel chute extension to increase discharge height

For option details see page 5 See specifications page 15-16 for bale capacities

Telehawk T2

The market leading Telehawk just got even better!

No tractor required! Now featuring a hydraulic loading gate for even easier self-loading, improved bale processing and greater manoeuvrability.

SPREADS

Straw up to 13.5m

BALE CAPACITY

1 x round / 1 x rect.



Specifications

Length (loading gate up)	2.7m
Length (loading gate down)	4.0m
Width	1.69m
Height	2.52m
Weight (without brackets)	1510kg
Blow Distance	up to 13.5m
Bale Capacity	1 x round / 1 x rectangular
Max. Bale Size (round)	1.5m dia.
Max. Bale Size (rectangular)	1.2 x 1.2 x 2.4m

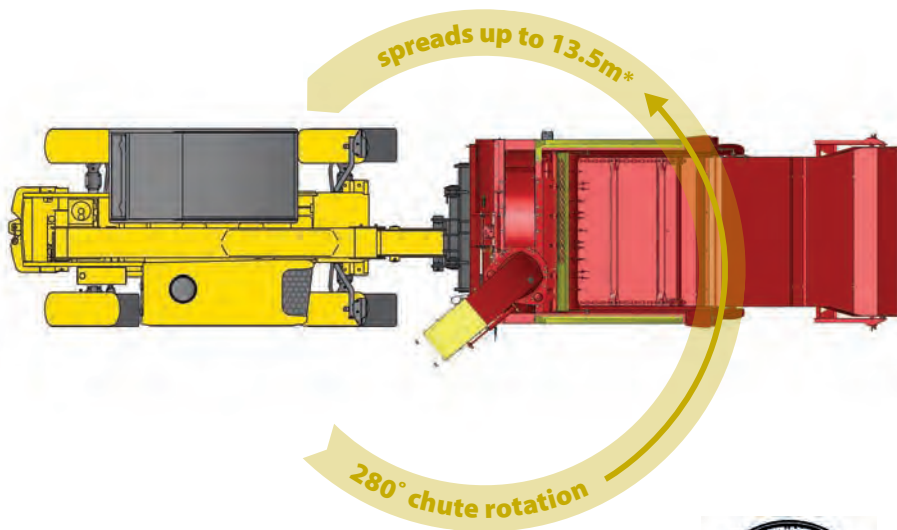
Minimum Handler requirements

Lift Capacity (min)	2.8 tonnes
Oil Flow (min)	60 l/min (13.3 gal/min)*
Oil Flow (max)	120 l/min (26.6 gal/min)*
Oil Pressure (min)	160 bar (2320 psi)
Oil Pressure (max)	270 bar 3915psi @ 80 ° (176 °F)**

* Oil flow at headstock. ** The hydraulic system requires a single acting valve with an unrestricted return.

Maximum return line pressure: 290psi.

...delivers flexible spreading



FORWARD **THINKING**

ACCESS ALL AREAS

Rotating 280° swivel chute can deliver straw to either side or in front of the machine.

ROUND OR RECTANGULAR BALES

Self loading operation, no tractor required.

SAVE STRAW

Bales are thoroughly teased apart.

EXCELLENT VISIBILITY

Front mounted for optimum visibility of the bedding operation.

LESS STRESS

Machine weight is close to the headstock.

IMPROVE ANIMAL COMFORT

Evenly spread straw up to 13.5m* in bedding areas.

* subject to telehandler oil flow.

Features



1 Round and rectangular bales

Round bales:
Max. 1.5m dia.

Rectangular bales:
Max. 1.2m x 1.2m x 2.4m.



2 A bed designed for comfort

Straw is gently bruised and spread. This ensures the bed has both the structure and absorbency to effectively support livestock and keep them clean.



3 Gently tease bales apart

Hook rippers or blades are fitted to the low-speed crossbeater work with the bed chain to ensure an even feed to the fan.



4 Intelligent control

Adjustable pressure sensing hydraulic system monitors crossbeater loading, and automatically stops or reverses the bed chain to optimise processing speed.

Specifications



7100



8100/8500

	7100	7100 SC	7150 SC	8100	8100 SC
Specification					
Chute	Side	Swivel	Swivel	Side	Swivel
Dual Chop	No	No	Yes	No	No
Silage	Yes	Yes	No	Yes	Yes
Straw	Yes	Yes	Yes	Yes	Yes
Capacity					
Crossbeaters	1	1	1	1	1
Capacity (m ³)	3.0	3.0	3.0	3.5	3.5
No. of 5' round bales	Straw x 2* / Silage x 1			2	2
No. of 8' rectangular bales (4'x 2'6"/ 4'x4')	1/1	1/1	1/1	1/1	1/1
Bale chamber (tailgate down) W x H x D	1.4 x 1.25 x 2.5m			1.55 x 1.25 x 2.98m	
Blow distance (max.)	22m	20m	20m	22m	20m
Min. tractor PTO HP	60 HP (90HP mounted)			60 HP	60HP
Dimensions					
Overall width (chute closed)	2.2/2.27m**	1.86/2.10m**	1.86/2.10m**	2.27m	2.1m
Overall length (tailgate up)	2.65/3.65m**			4.14m	4.14m
Overall length (tailgate down)	3.80/4.80m**			5.38m	5.38m
Overall height (chute closed)	2.11/2.3m**	2.29/2.59m**	2.29/2.59m**	2.41m	2.58m
Unladen weight (mounted)	1640kg	1640kg	1780kg	1880kg	1880kg
Tyre size	trailed option 10.00/75-15.3			10.00/75-15.3 (options available)	
Oil flow rate (min/max) (l/min)	35 - 60	35 - 60	35 - 60	35 - 60	35 - 60

Key:

* With tailgate extension.

*** Not suitable for round bale silage unless chopped.

** Mounted (resting on ground) /trailed.

The company's policy is one of continuous improvement and development, therefore specifications are subject to change without prior notice.

Specifications



9500



1010

8150 SC	8500	8500 SC	8555 SC	9500	9500 SC	1010	1010 SC
Swivel	Side	Swivel	Swivel	Side	Swivel	Side	Swivel
Yes	No	No	Yes	No	No	No	No
No	Yes	Yes	No	Yes***	Yes***	Yes***	Yes***
Yes	Yes	Yes	Yes	Yes	Yes	Yes	Yes
1	1	1	1	2	2	2	2
3.5	4.5	4.5	4.5	8.0	8.0	10.0	10.0
2	2	2	2	3	3	3***	3***
1/1	1/1	1/1	1/1	2/1	2/1	4/2	4/2
	1.70 x 1.25 x 2.98m			1.70 x 1.55 x 4.00m		1.70 x 1.58 x 5.70m	
20m	25m	22m	22m	25m	22m	25m	22m
60 HP	80 HP	80 HP	80 HP	80 HP	80 HP	80 HP	80 HP
2.1m	2.44m	2.16m	2.16m	2.49m	2.21m	2.42m	2.42m
4.14m	4.14m	4.14m	4.14m	5.2m	5.2m	6.17m	6.17m
5.38m	5.38m	5.38m	5.38m	6.33m	6.33m	7.96m	7.96m
2.58m	2.59m	2.77m	2.77m	2.9m	2.9m	2.93m	2.93m
2255kg	2080kg	2080kg	2415kg	3007kg	3017kg	3580kg	3590kg
	10.00/75-15.3 (options available)			305/55 R22		385/55 R22.5	
35 - 60	35 - 60	35 - 60	35 - 60	35 - 60	35 - 60	35 - 60	35 - 60

Scotland Manager
David Haggart 07970 136616
david.haggart@teagle.co.uk

North Manager
Gary Eastham 07866 532666
gary.eastham@teagle.co.uk

East Manager
David Threadgold 07970 136615
david.threadgold@teagle.co.uk

West Manager
Steve Offland 07970 462240
steve.offland@teagle.co.uk

South East Manager
Chris White 07970 136614
chris.white@teagle.co.uk

South West Manager
Mike Sanders 07970 836705
mike.sanders@teagle.co.uk

Ireland and Northern Ireland Sales Manager
Frank Byrne +353 (0)871 948404
frank.byrne@teagle.ie

